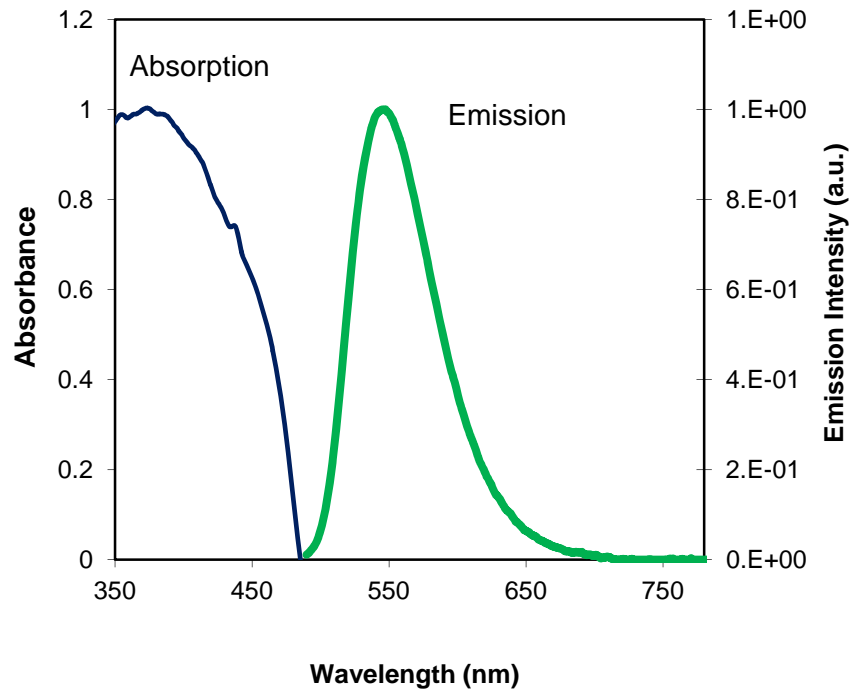


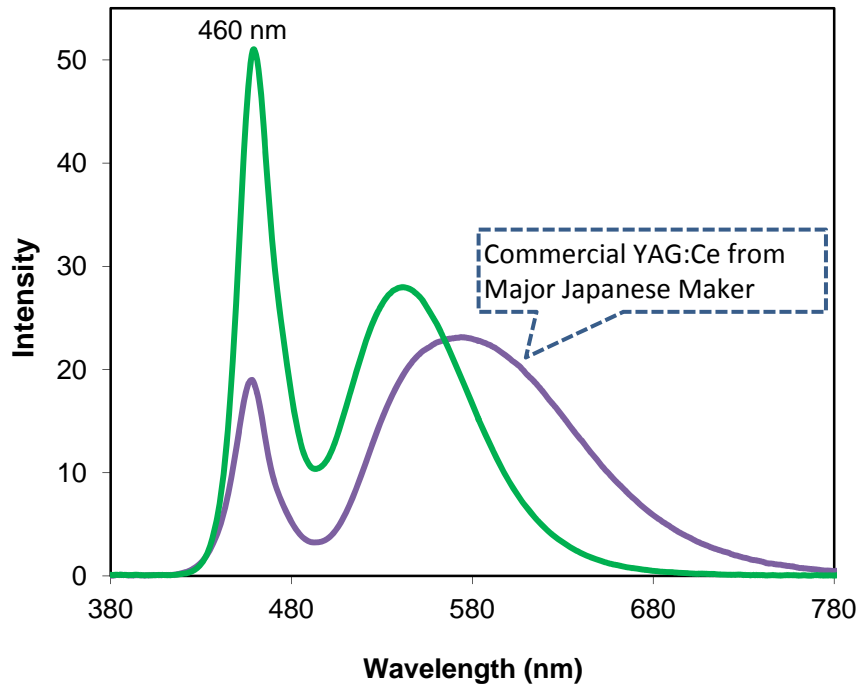
## Phosphor Datasheet

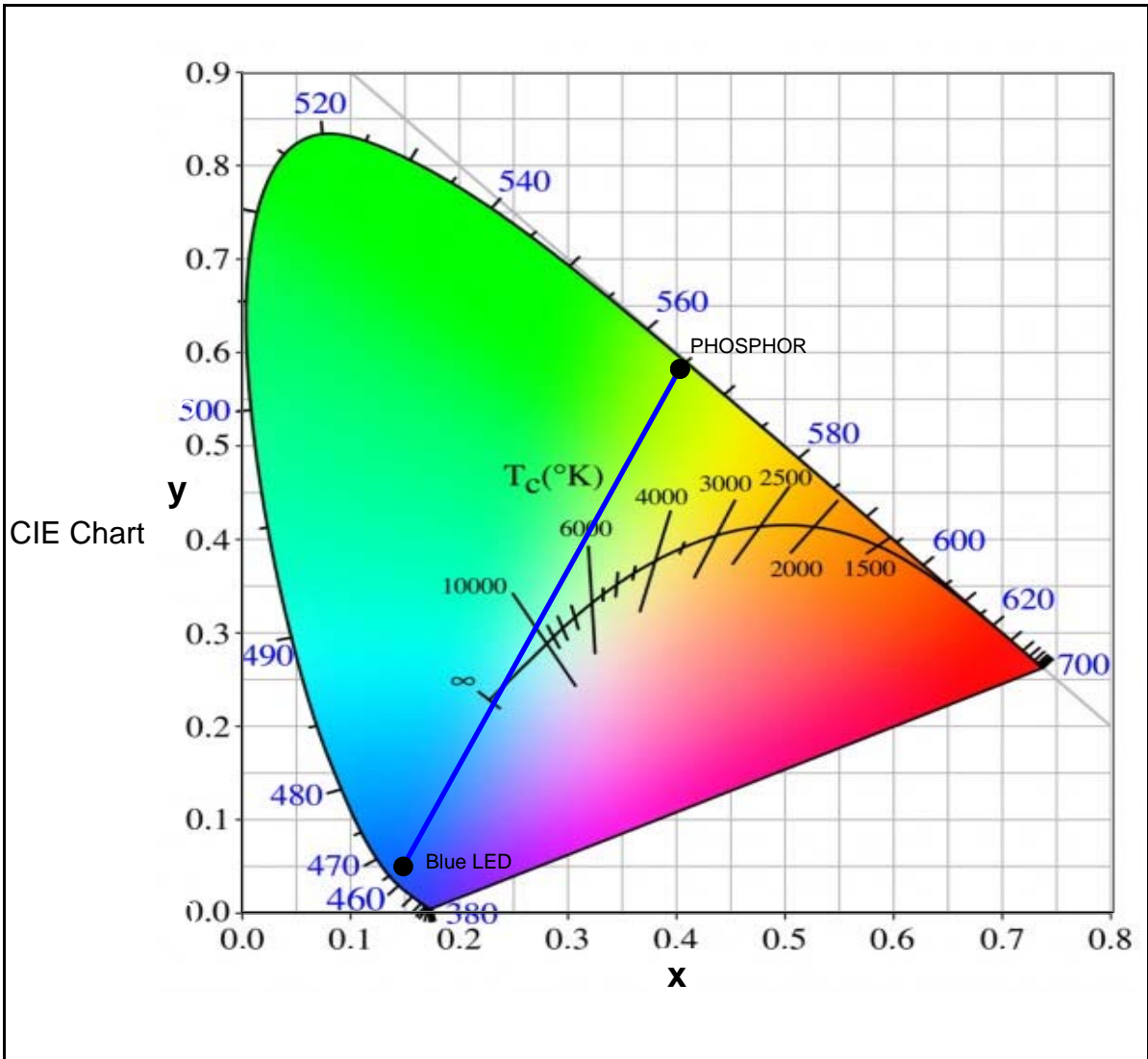
Product Name	HTG540
Chemical Formula	Nitride Composition
Excitation Wavelength	Recommended Range: 350 nm - 460 nm
Peak Wavelength	540 nm
FWHM	80 nm

Absorption & Emission Spectra

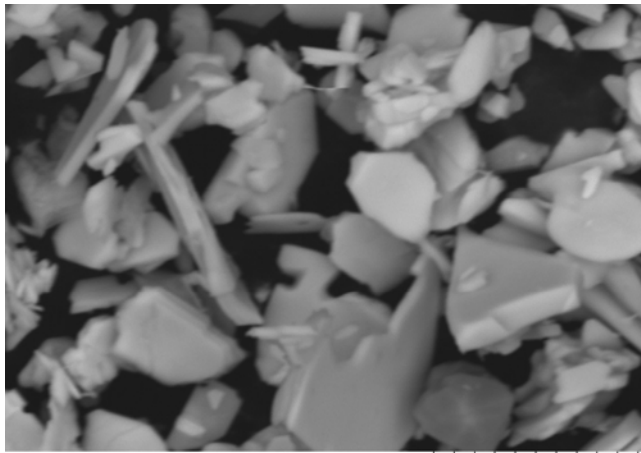


Relative Emission using Blue LED Excitation (Reflection Mode)





CIE Coordinates	0.402	0.583	
Particle Size	Mean ~ 8 $\mu\text{m}$		
Body Color	Green		
Handling Guidelines	See MSDS		



TM-1000\_0071 2011/11/21 11:21 D7.6 x6.0k 10  $\mu\text{m}$